



**Don't
Suffocate Truth**
لا تخنقوا الحقيقة



Symptoms of Exposure of Chemical Weapons Used in Syria

SOURCE:SAMS



SARIN



1 Nerve Agent
Affects the nervous system

2 affecting nerve transmissions.

3 Causes seizures and loss of muscle control

Examples:

Sarin

VX

Other organophosphate

Tabun

compounds such as pesticides

severe exposure



Loss of consciousness



Convulsions



Foaming at the mouth



Paralysis



Respiratory failure



Cardiac arrest



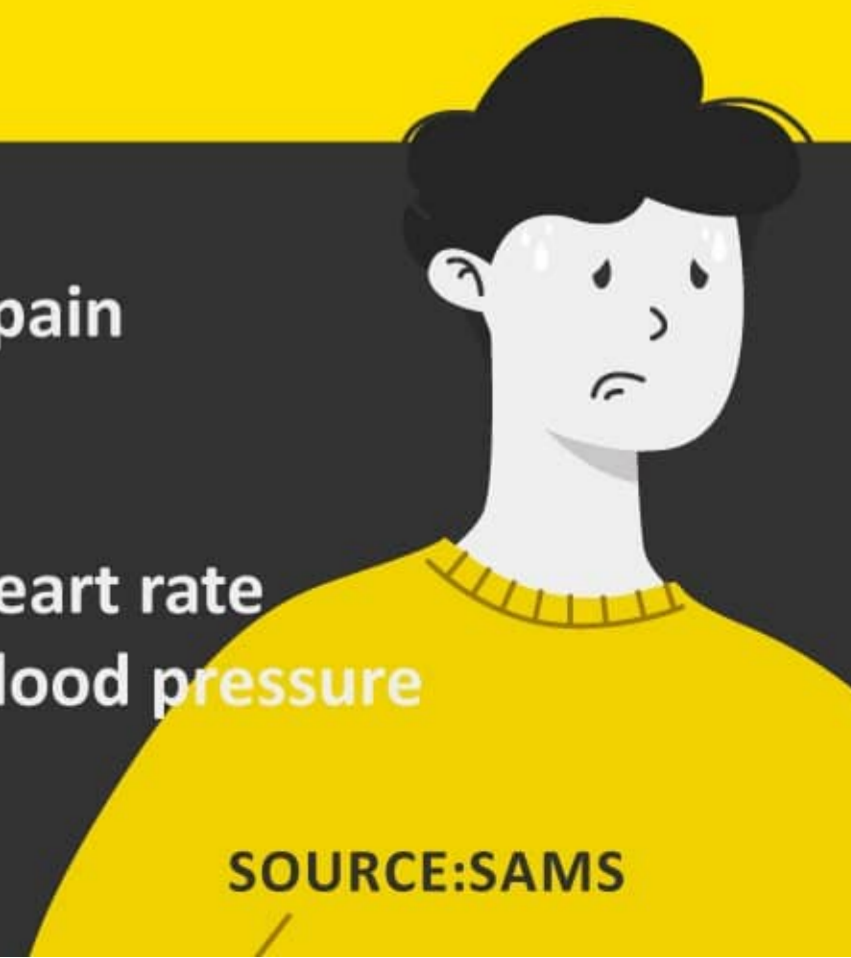
Death

Mild exposure

- Runny nose
- Watery eyes
- (Pinpoint pupils (miosis
- Blurred vision
- Drooling
- Excessive sweating

- Cough
- Chest tightness
- Rapid breathing
- Diarrhea
- Nausea
- Vomiting

- Abdominal pain
- Weakness
- Headache
- Change in heart rate
- Change in blood pressure





CHLORINE



1 Choking Agent
Affects the respiratory tract

2 causing irritation of the nose, throat, and lungs.

3 Can cause a buildup of fluid in the lungs.

Examples:

Chlorine

Phosgene

Chloropicrin

Mild exposure



Eye tearing



Nose and throat irritation



Runny nose

severe exposure

- Difficulty breathing
- Chest pain
- Nausea and Vomiting
- Muscle weakness
- Fluid in the lungs
- Cough
- Headache
- Lightheadedness
- Pulmonary edema
- Death
- Dyspnea upper airway swelling



BZ OR AGENT 15



1 Psychotomimetic Agent
Used as incapacitator

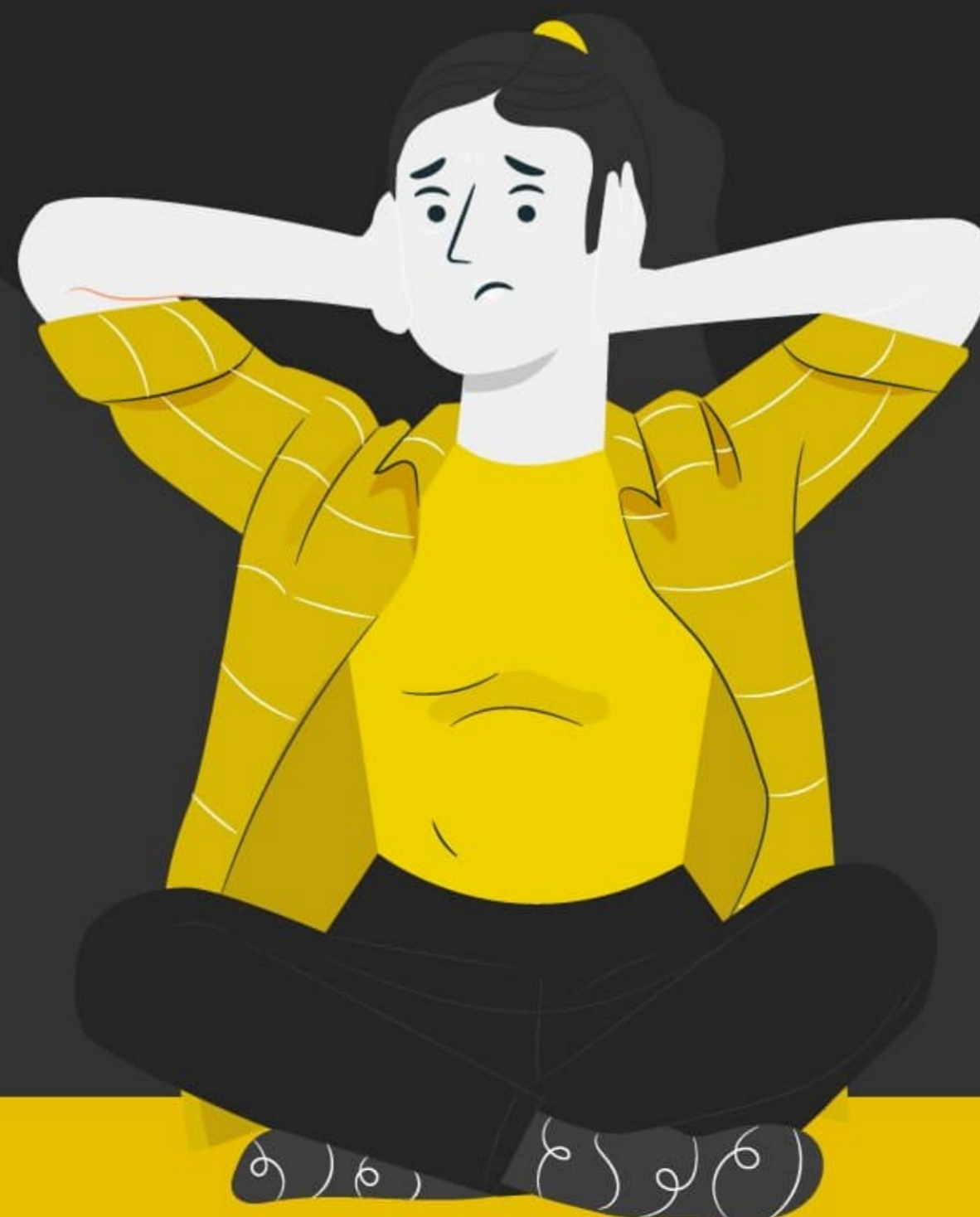
2 causing hallucinations and
disorientation.

Example:

BZ

Mild exposure

- Dilated pupils
- Blurred vision
- Agitation
- Hallucination
- Dry/flushed skin
- Gastrointestinal issues



severe exposure

- Tachycardia
- Hypertension
- High temperature
- Hypothermia
- Death



Symptoms of Exposure of Chemical Weapons Used in Syria

MUSTARD GAS



Don't Suffocate Truth
لا تخنقوا الحقيقة

Blister Agent



cause cell poisoning resulting in skin blisters.



Causes irritation of the eyes, respiratory tract, and skin

Examples:

Sulphur Mustard

Nitrogen Mustard

Lewisite

severe exposure



2-12 hours after exposure:

- runny nose, sneezing,
- hoarse ness, bloody nose,
- sinus pain,
- shortness of breath,
- coughing,
- abdominal pain, diarrhea,
- fever, nausea,
- vomiting, blisters begin to develop.



13-24 hours after exposure:

symptoms continue to worsen.



24 hours after exposure:

- blisters and cough become worse
- skin pigmentation
- aplastic anemia
- Long term risk of respiratory damage and death from respiratory illnesses, and respiratory cancer
- Mustard gas can lead to death in high concentrations



2-12 hours after exposure:

- redness, itching of the skin, pain, swelling of eyes.



13-24 hours after exposure:

- runny nose, sneezing
- hoarseness
- bloody nose, sinus pain
- shortness of breath, coughing
- blisters begin to develop.



24 hours after exposure:

- Blisters and cough become worse
- skin pigmentation
- irritation, pain, swelling of eyes, tears, light sensitivity, blindness